

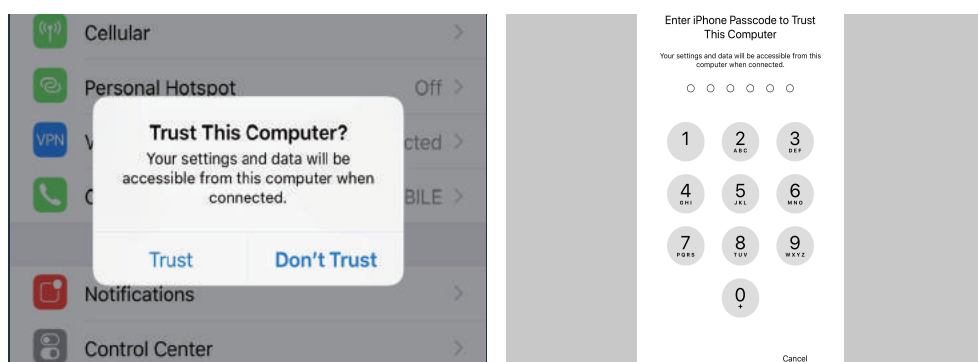
There are three types of connection for IOS system. You can choose one of these connections.

1 Wired Screen Mirroring Connection

- 1 Press the signal source key "S" of the projector or the remote control and select "Miracast" to enter the interface.



- 2 Plug an original USB charging cable into the USB port of this projector.
- 3 Please select "Trust this device" when the iPhone asks "Trust" or "Don't trust", and enter the Your iPhone password to connect.



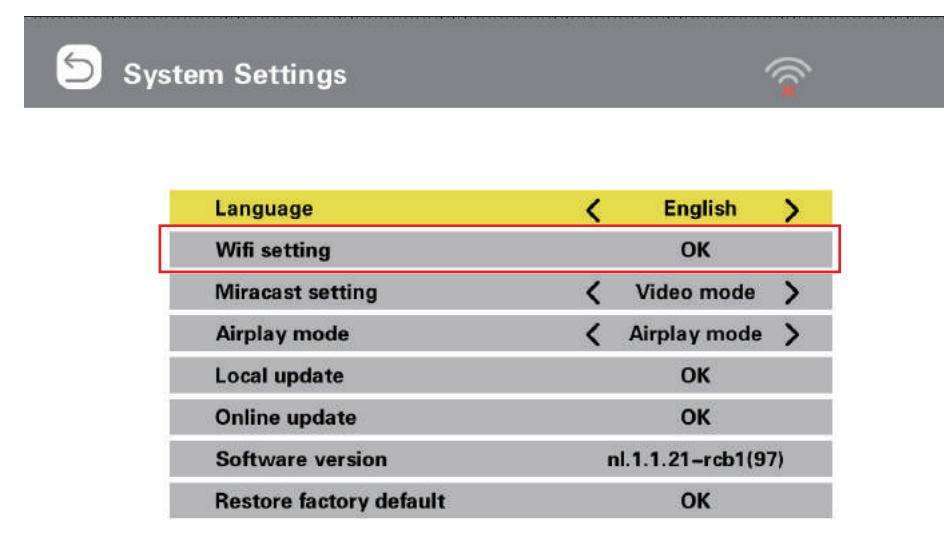
2 Wireless Screen Mirroring Connection --Requires Cellular Data Traffic Transfer

- 1 Press the signal source key "S" of the projector or the remote control and select "Miracast". (Picture Guidelines Refer to the first step of ios system wired connection)
- 2 Open the wifi in the Phone settings, search and select projector hotspot Dualcast-***, enter password to connect (Note: The hotspot name is on the screen "SSID: Dualcast-***", the password is "PSK: *****". If the phone is disconnected from the projector wifi at this point, reconnect the phone to the projector hotspot)
- 3 Slide the phone interface from the bottom up to enter the control central (Full-screen phones slide down from above, those with home button slide up from below), then open "Screen Mirroring". Then Search and select the projector device (Note: The name of the projector device is Dualcast-***), click to connect.



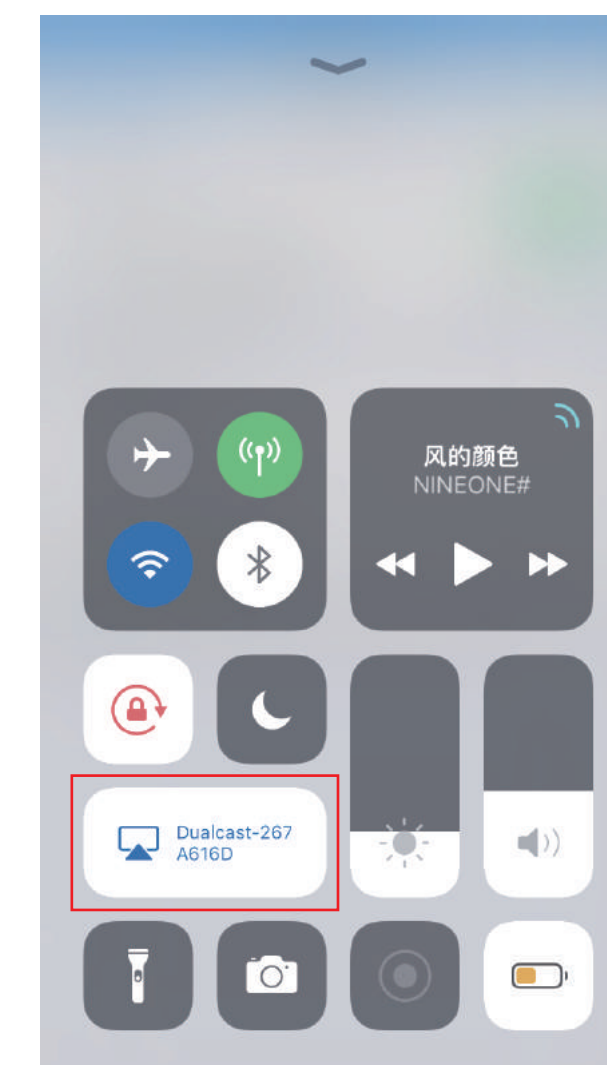
3 Wireless WIFI Connection --Wifi Transfer

- 1 Press the signal source key "S" of the projector or the remote control and select "Miracast".
- 2 Long press the "Menu" button on the projector or remote control, click wifi setting ,select your home wireless network in the projector display interface, enter the password.



- 3 Open the phone WiFi settings, connect to your home wireless network

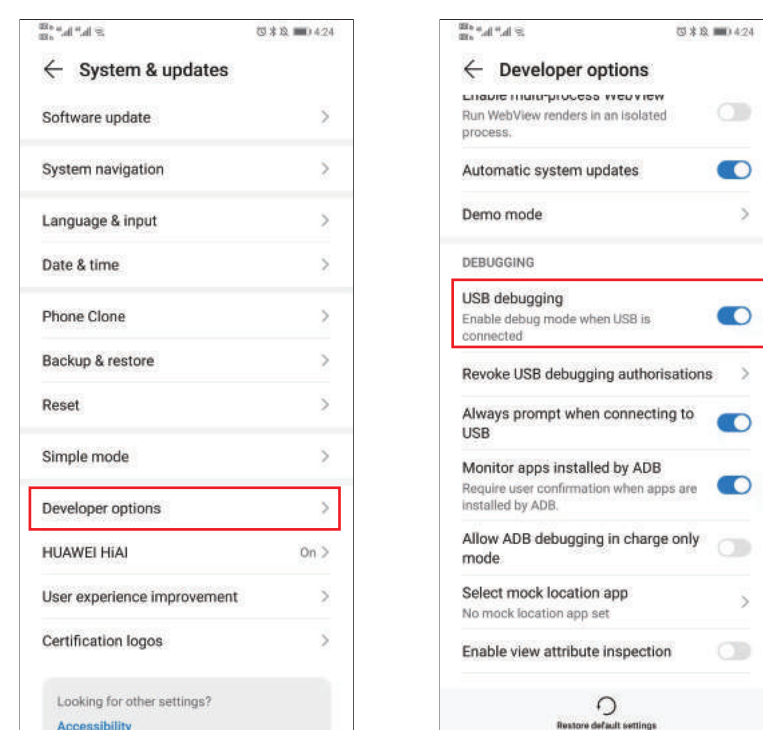
- 4 Slide the phone interface from the bottom up to enter the control central (Full-screen phones slide down from above, those with home button slide up from below), then open "Screen Mirroring". Then search and select the projector device. (Note: the name of the projector device is Dualcast-***), click to connect.



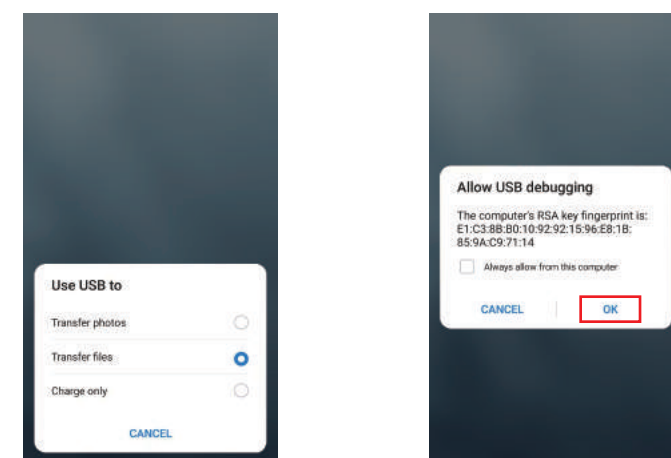
There are two types of connection for Android system. You can choose one of these connections.

1 Wired Screen Mirroring Connection

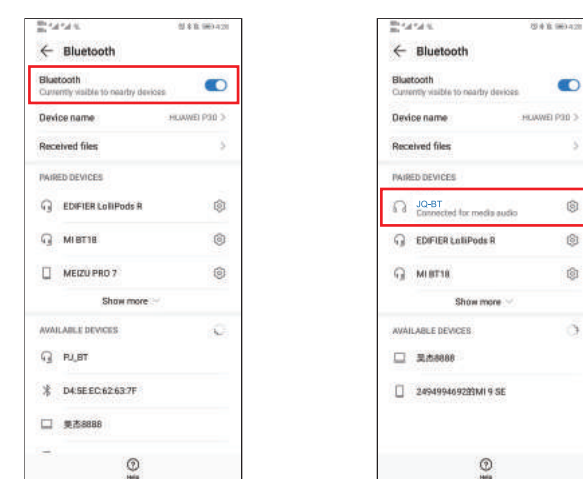
- 1 Press the signal source key "S" of the projector or the remote control and select "Miracast".
- 2 Find the developer option, turn on USB debugging function. Keep the mobile phone awake and connect the USB charging cable.



- 3 After plugging in the data cable, the phone will pop up an interface, select "transfer files", then click "ok" to achieve the screen mirroring.

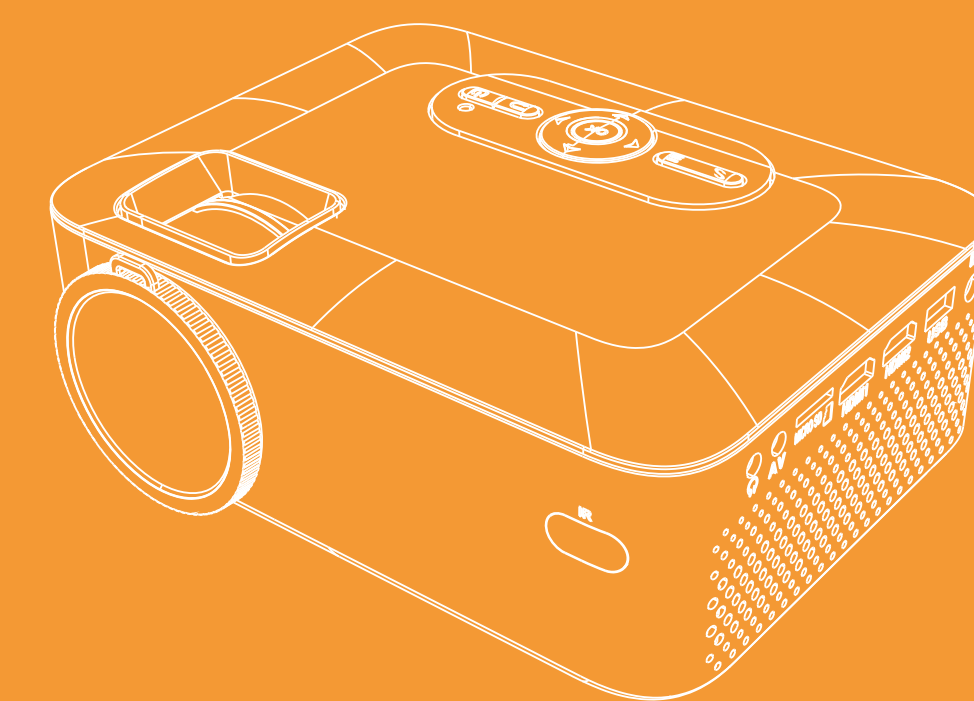
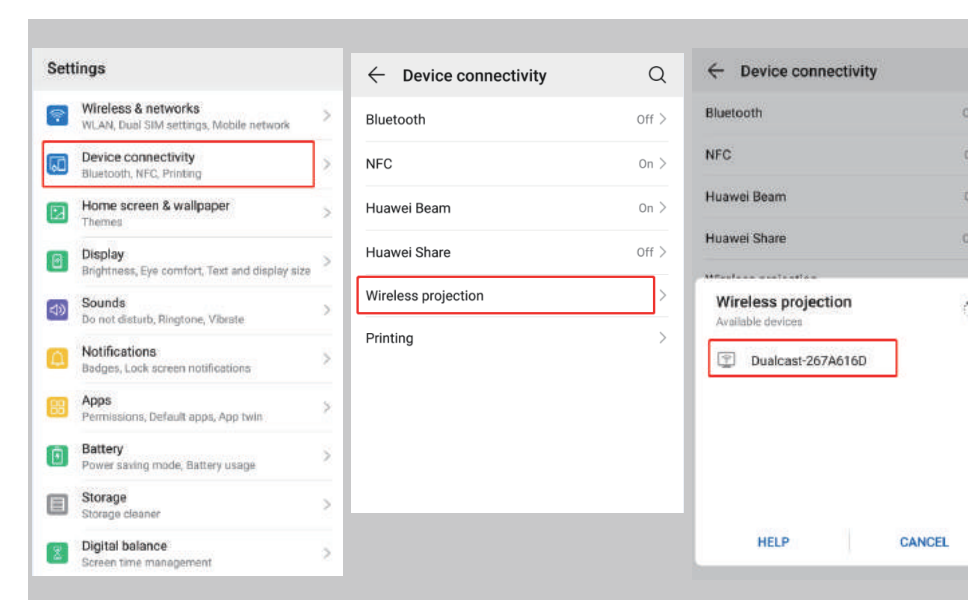


- 4 At this time, the voice is still played via the mobile phone. If you need the sound to play on the projector, you can turn on the Bluetooth of your mobile phone and choose to connect the projector Bluetooth "JBQT" device. (Note: When connecting to Bluetooth for the first time, if the projector still has no sound, please unplug the data cable and connect again)



2 Wireless Screen Mirroring Connection

- 1 Press the signal source key "S" of the projector or the remote control and select "Miracast". (Picture Guidelines Refer to the first step of ios system wired connection)
- 2 Since different brands of Android phones have different settings, find the screen share and connect the projector. Samsung phones find "Smart View", Huawei phones find "Multi-screen". Then Search and select the projector device (Note: The name of the projector device is Dualcast-***), click to connect.



Model: VL208

Operation Guide for Connect to Projector

VILINICE